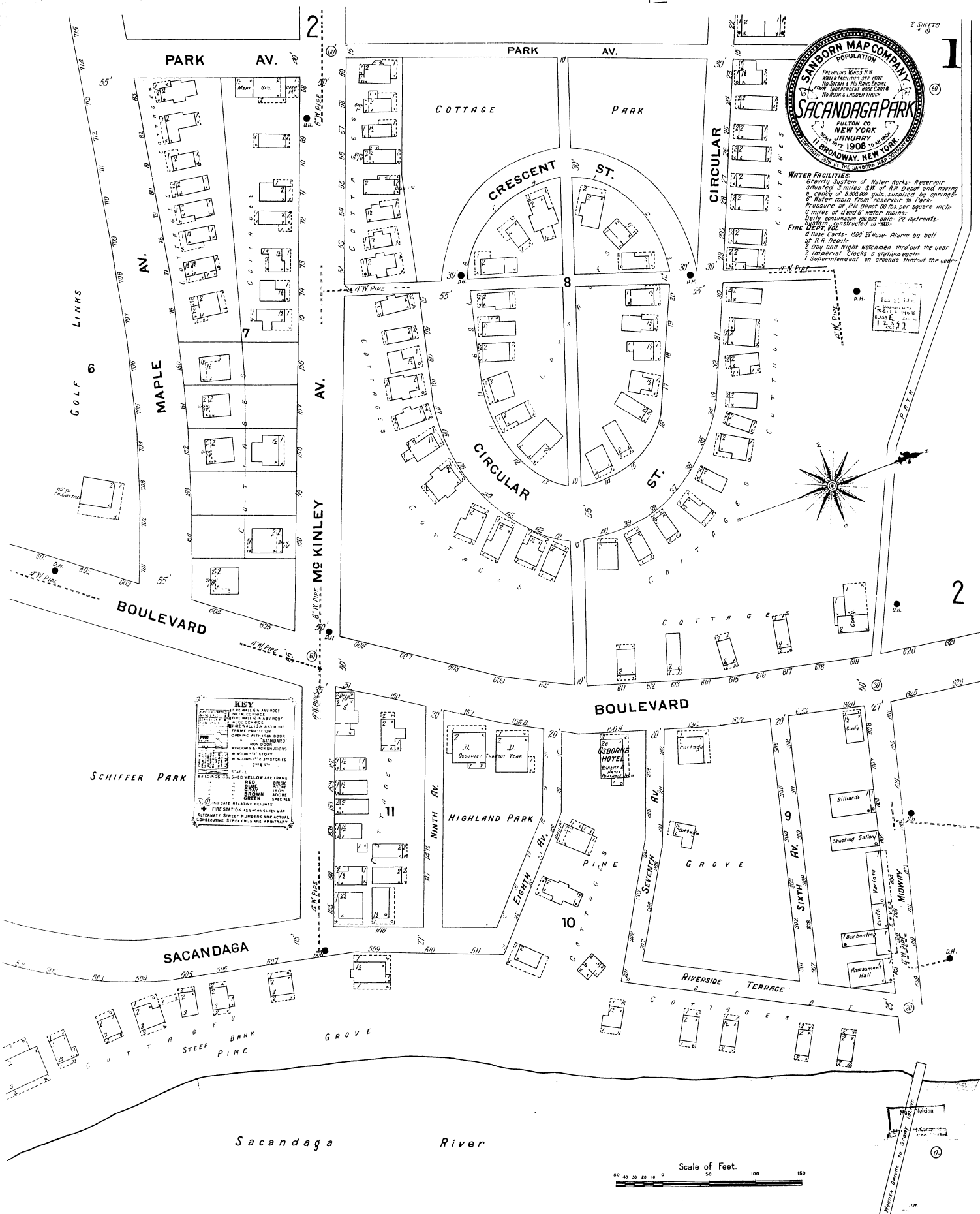


WATER FACILITIES
 Gravity System of Water Works. Reservoir situated 3 miles SW of Riv Depot and having a capacity of 8,000,000 gals, supplied by springs & water main from Reservoir to Park.
 Pressure at Riv Depot 80 lbs. per square inch. 8 miles of 8" and 6" water mains.
 Daily consumption 80,000 gals. 22 hydrants.
FIRE DEPARTMENT
 4 Hose Carts, 1500 2 1/2" Hose, Alarm by bell of Riv Depot.
 2 Day and Night watchmen throughout the year.
 1 Imperial Clock & siren each.
 1 Superintendent on grounds throughout the year.



Map 19 1908 Sanborn Map